

Chesa el Toulà / St Moritz, Switzerland



Brand new to the rental market for the 2018/2019 season, Chesa el Toula is one of St. Moritz's most exclusive properties with an incredible spa, spacious living and superb entertainment area.

BEDROOMS

6 bedrooms, sleeps 14

FACILITIES

Swimming pool

Hot tub

Steam room

Cinema/tv room

Bar

Games Room

Gym/Fitness

Wellness/Relaxation Room

Wine Cellar

Terrace/Balcony(ies)

Fireplace(s)

Garage

Garden

Wi-Fi

Ski Room

Apple TV

Sat/Cable TV

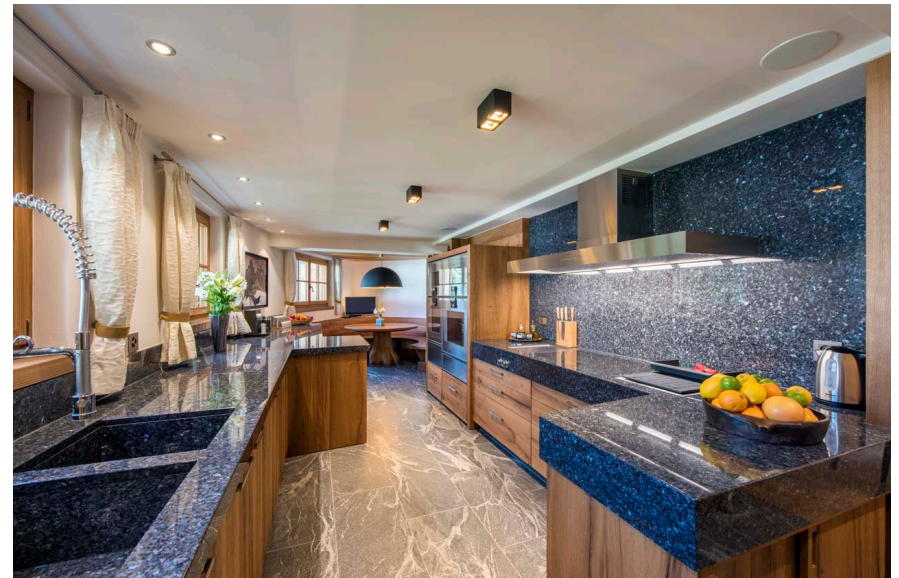
Laundry Room

Ultra-exclusive luxury hideaway with ample living space

Located in the prestigious area of Suvretta in St. Moritz sits Chesa el Toula, an ultra-exclusive hideaway that has been in the owner's family for two generations having been built by his grandfather. Having been completely renovated, this stunning property is brand-new to the rental market for the 2018/19 season. Set over five floors, Chesa el Toula offers 900m² of living space. Elegantly designed, the interior presents a unique sense of style, maintaining traditional Engadin features whilst updating the property to include the finest Italian stones, marbles, designer furnishings and countless one-off pieces from around the world. The property is conveniently located just a two-minute drive from the nearest ski lift.



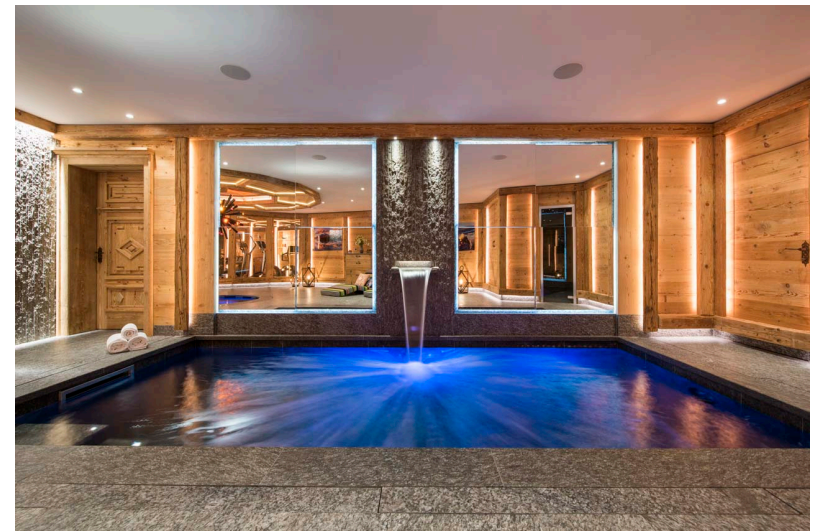
This stylish home has a cosy living room with large fireplace, flat screen TV and bar, a sophisticated dining room with a table seating 10, and an immaculate family kitchen with breakfast corner. There is a separate, fully-equipped professional kitchen. The exquisite furnishings have been sourced from Le Corbusier, Rugiero, Casa Milano, Porta Romana amongst other exclusive designers.



The magnificent wellness and entertainment areas are the highlights of el Toula



Chesa el Toula is one of the few rental properties in St. Moritz to have a swimming pool. Come sundown you can ease your aching muscles in the chalet's indoor or outdoor hot tubs, steam away in the hammam or relax on one of the sun loungers beside the pool. If you still have energy to burn there's a well-equipped gym for working out.



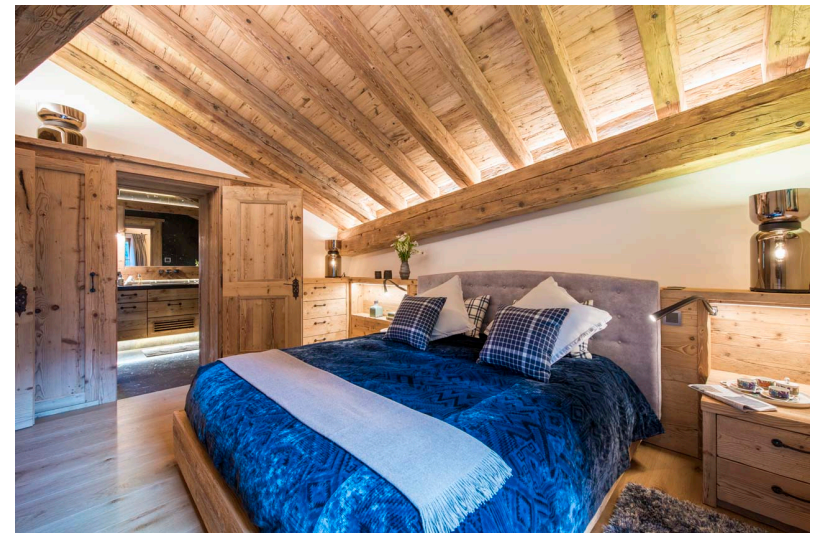
Chesa el Toula's cinema room is a delight - completely soundproof with super high-tech sound system and slumber-worthy seating, this is the ultimate spot to chill out. The property also has a bar / games room with pool table and a wine cave with a selection of rare fine wines. Guests also have use of a Heritage Land Rover Defender within resort (driven only by the chalet manager).



Opulent en-suite bedrooms



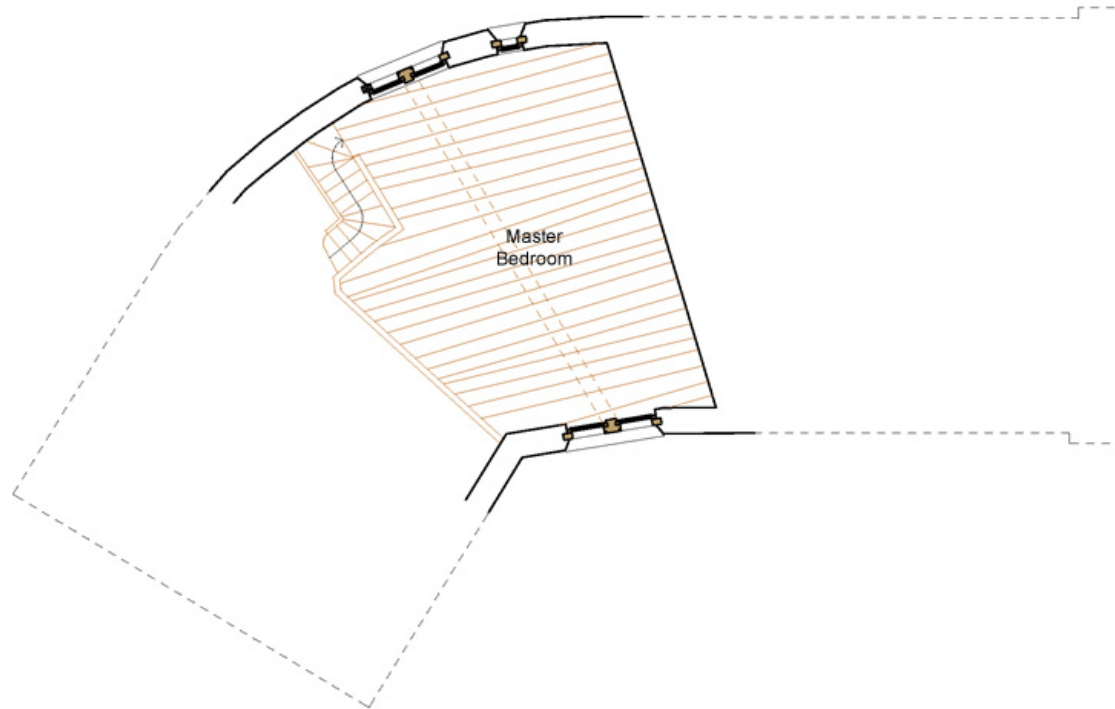
Chesa el Toula is able to accommodate ten adults and four children across six luxurious en-suite bedrooms. The master bedroom is particularly charming, set under the eaves with a spacious dressing room and en-suite bathroom. There are a further three double bedrooms, all with en-suite bath or shower rooms.



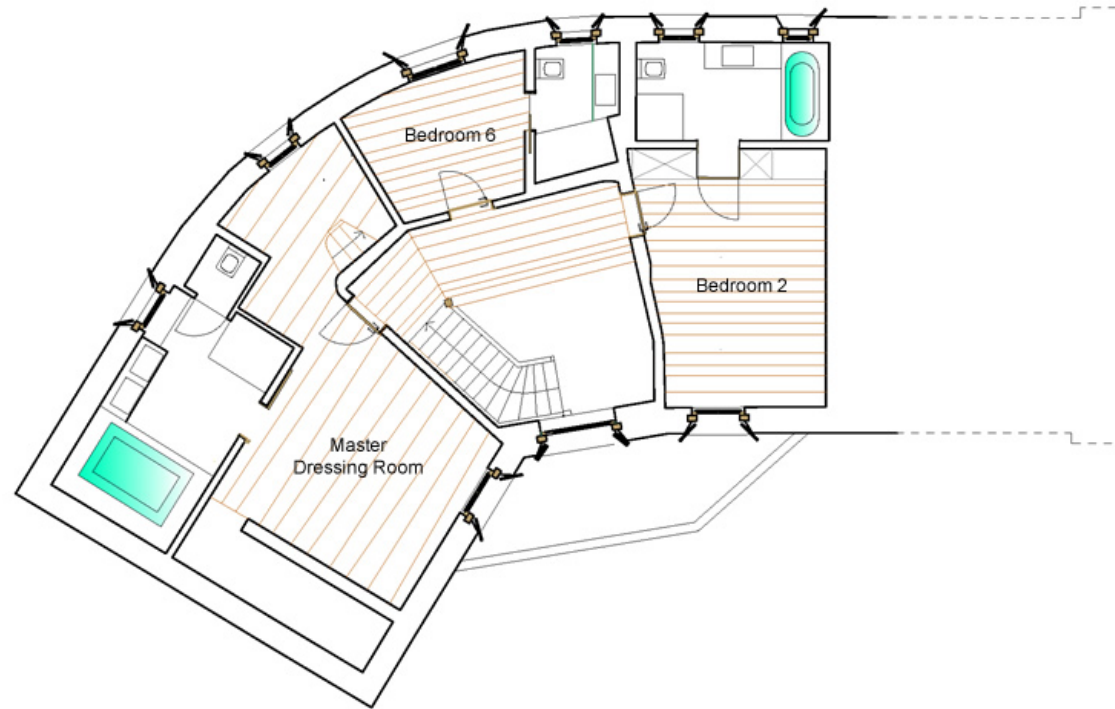
The chalet has two bunk bedrooms - one with king-size beds, the other suitable for children. Each has an en-suite shower room. There is also a further bedroom with en-suite shower room which is available for staff.



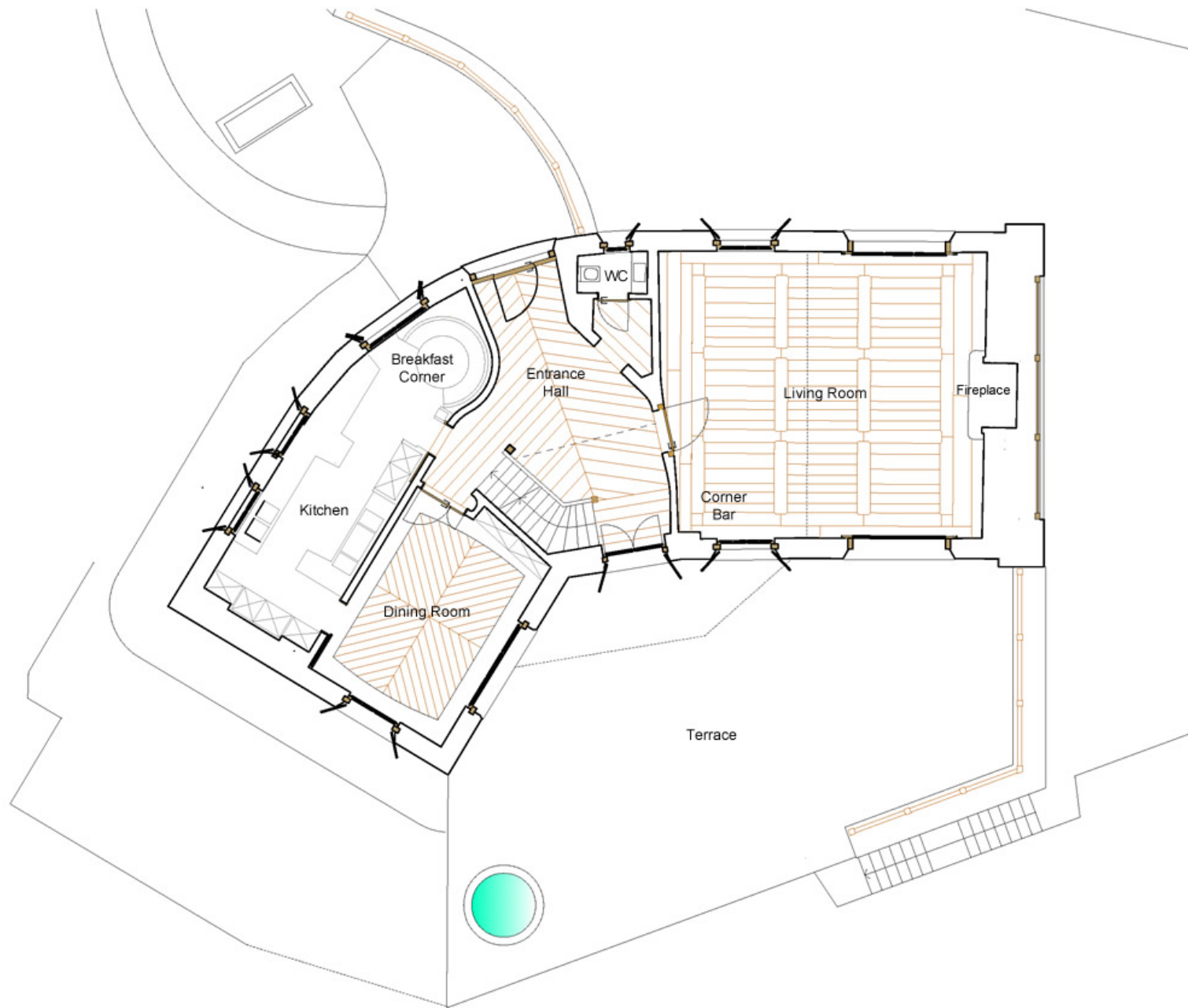
Floorplan/Mezzanine



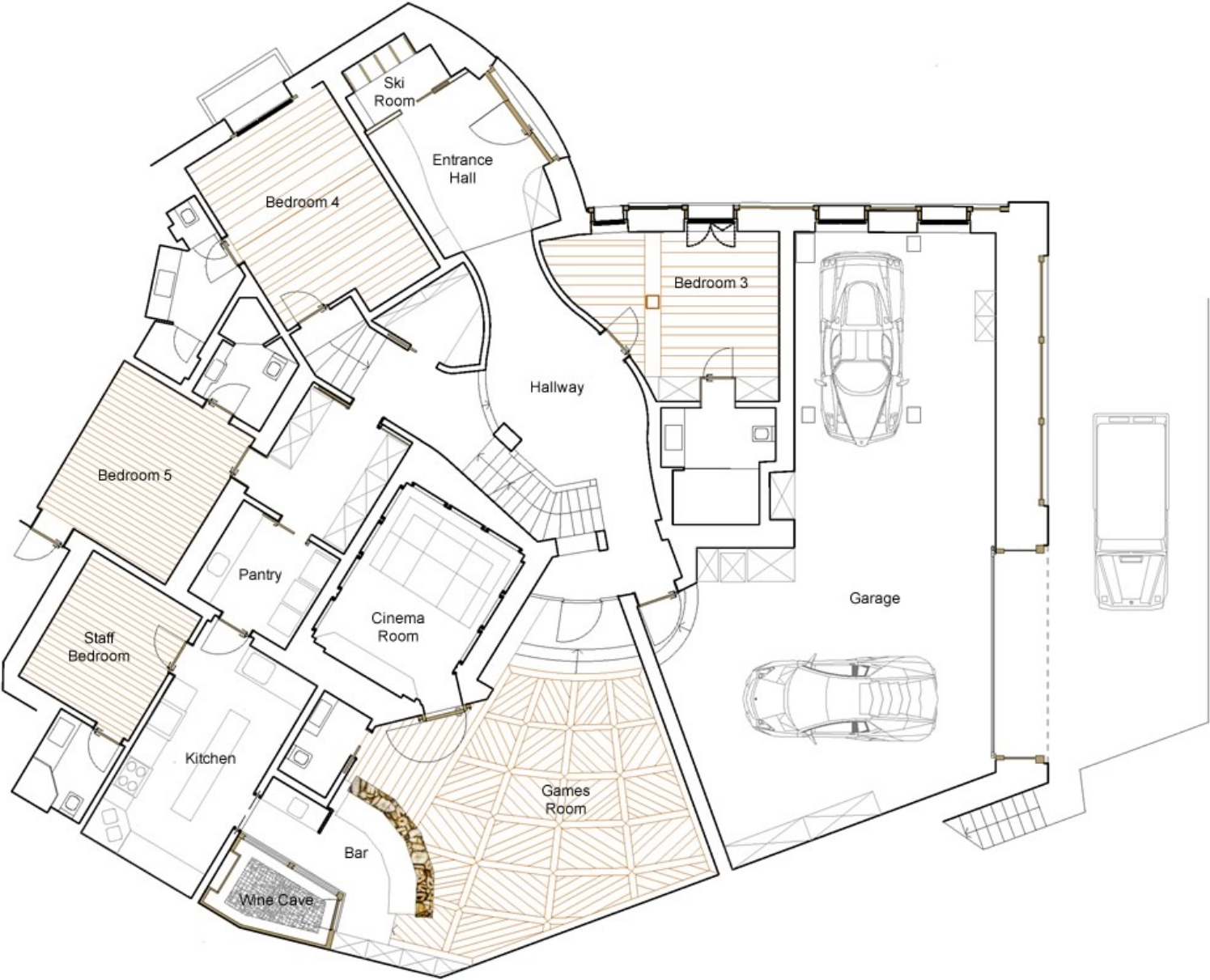
Floorplan/Level 1



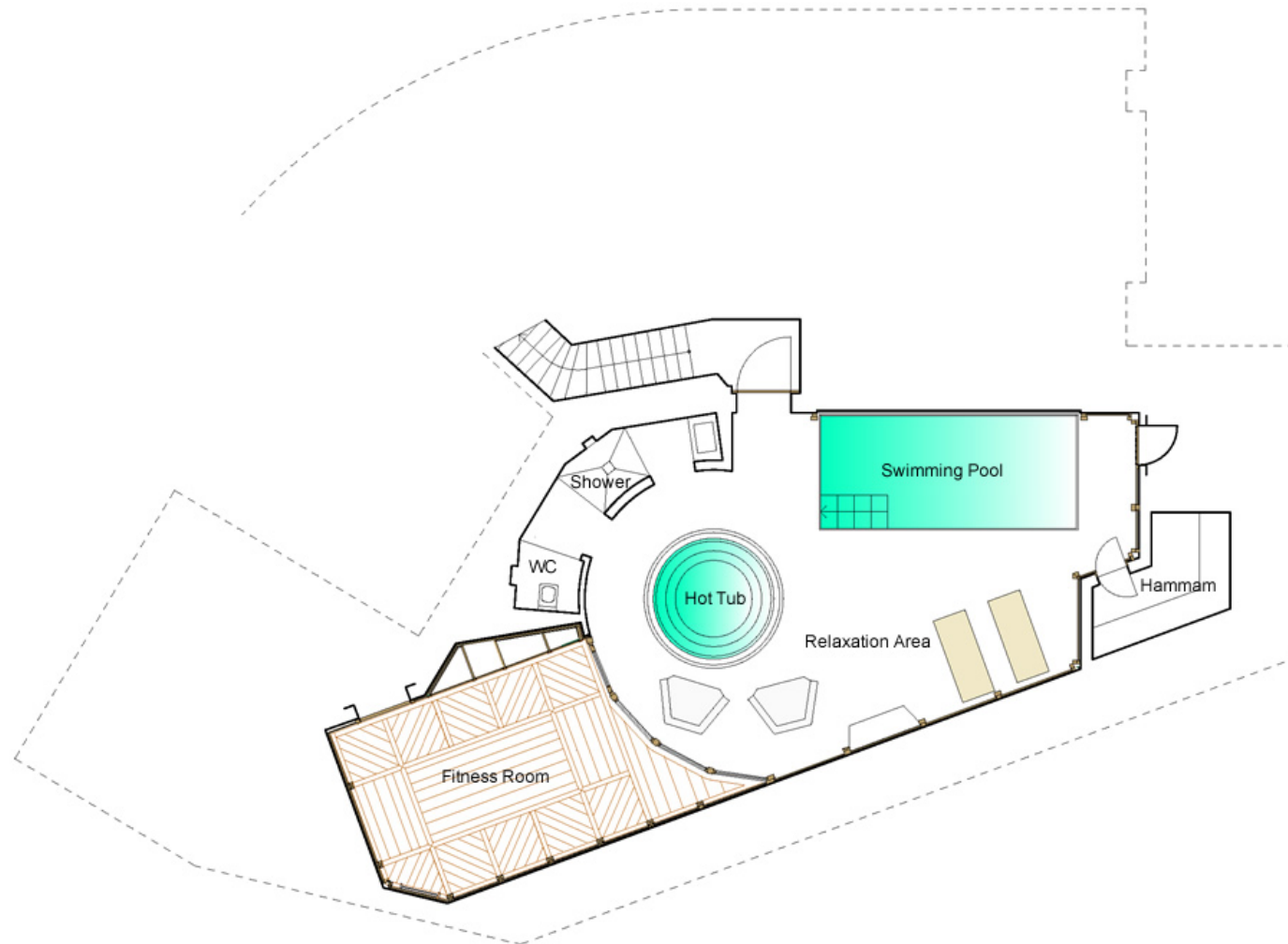
Floorplan/Level o



Floorplan/Level -1



Floorplan/Level -2



Rooms & Facilities



Clockwise from top Left:
1. Front view of the property
2. Main entrance
3. Stylish living room with sloping roof and fireplace
4. Dining room



Rooms & Facilities



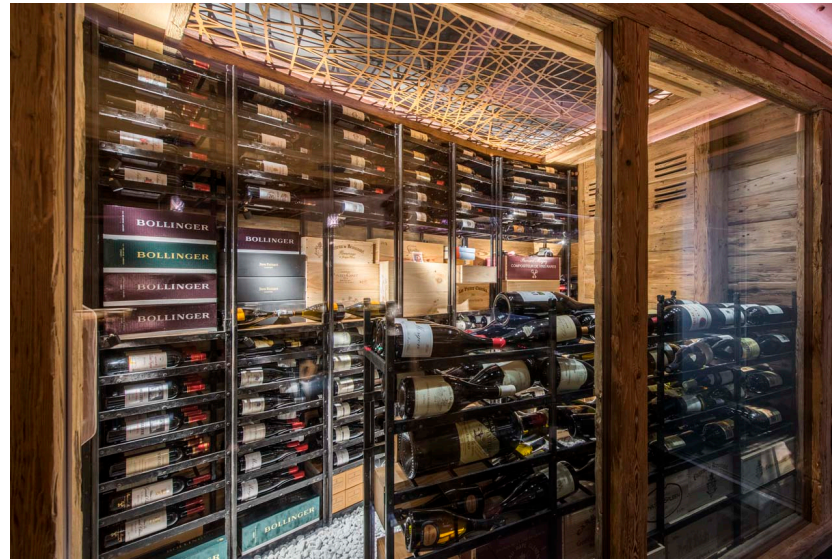
Clockwise from top Left:
1. Well-equipped family kitchen
2. Master bedroom with dressing room and en-suite bathroom
3. Double bedroom on top floor with balcony and en-suite bathroom
4. Double bedroom on ground floor with en-suite shower room

Rooms & Facilities



- Clockwise from top Left:
1. Double bedroom on lower ground floor with en-suite shower room
 2. Double bunk room with en-suite shower room
 3. Children's bunk room with en-suite shower room
 4. Cinema room

Rooms & Facilities



Clockwise from top Left:
1. Incredible spa with indoor swimming pool, hot tub and hammam
2. Wine cave
3. Garage with Land Rover Defender for guests' use (with chalet driver)



Location & Map



Details

Airport	Zürich
Travel time to airport	3 hours
Resort altitude	1,856m
Top altitude	3,303m