



Chalet Etesian

Gstaad

Proudly sitting in the heart of Gstaad, Chalet Etesian is a property full of beautiful surprises. Stunning interior design and luxurious features make this Chalet truly unique.

Chalet Etesian is a traditional chalet that has recently undergone an exciting renovation. An extension has been created to produce two very distinct parts to the chalet. One is the sophisticated, gorgeous, and comfortable living area with seven en-suite bedrooms and the impressive living and dining rooms. However, step into the new area and you will find an incredible entertainment room designed to emulate a nightclub of the highest class. Here is also a master bedroom, cinema room, and indulgent spa.

Sleep: 14+2 . Bedrooms: . Living area: 950 m2 .



Specification .



Step through the gateway to luxury as you enter Chalet Etesian, an extraordinarily grand property set in the very heart of Gstaad. This prodigious chalet sleeps a total of 14 adults and two children in a treasure trove of antique pieces, beautiful art, and hand-crafted furniture to delight the senses. From every angle you will be astounded by the craftsmanship that gave birth to this exquisite property.

This chalet is full of surprises. It is set out over five floors with two very distinct parts to it. Each floor can be easily accessed by stairs or a lift. It boasts seven plush bedrooms and a variety of impressive living areas.

From the ground floor, walk through the main chalet entrance into an impressive hallway. On the ground floors are located a range of gorgeous boudoirs - one twin bedroom with en-suite bathroom and a double bedroom with en-suite shower room.

Here is also a guest restroom, a laundry room, and a ski room to keep all of your equipment secure. Take the stairs down to the spa area for some utter relaxation with a private hot tub, indulgent hammam, shower, and separate restroom. Here you can also recharge your batteries in the chic gym area. On this floor you can retreat to the new master bedroom, the luxurious private spa, cinema room with Wii, and a huge entertainment room as sophisticated as any high-end nightclub for stylish nights in.

On the first floor is the main sleeping area, presenting five individually-designed bedrooms. These include three en-suite double bedrooms, a large master en-suite bedroom, and an adorable children's bunk room. Three of these bedrooms give access to the beautiful garden where you can enjoy the wondrous views of the surrounding mountains.

For quality time with your family and friends, the elegant dining room and opulent living area are located on the second floor, complete with stunning design touches. This floor also houses the separate kitchen and a cosy TV snug area for long evenings curled up with a mug of Swiss hot chocolate. Step out from the living room onto a wrap-around balcony providing awe-inspiring views of the landscape or enjoy the sights from the the upper terrace.

The top floor is dedicated to a beautiful bedroom suite with en-suite bathroom and private living spaces all tucked away from the rest of the house for those seeking additional privacy.

To keep your valued vehicles safe, there are two private external parking spaces at the property. A staff apartment is located at the bottom of the chalet with its own private entrance, allowing your hosts, maids, and chefs to be close at hand in order to cater to your every wish.



Facilities:

950 m². Sleep 14 adults + 2 Children
 Spa with ham, Hot tub
 Fitness room, relaxation areas
 Cinema room
 Private TV room
 All round WiFi broad band
 2 private exterior car parking spaces

Location:

Chalet Etesian is located in a prime position at the centre of the resort of Gstaad.
 Just a short stroll from the village, you can enjoy all of the perks of Nordic town life with a great degree of privacy.

Layout

TOP FLOOR

- 1 Double bedroom (en-suite bathroom, sleeps 2)
Private bar and dining area with kitchenette
Private living area
Balcony x2

FIRST FLOOR

- 1 Double bedroom (en-suite bathroom, sleeps 2)
- 1 Double bedroom (en-suite bathroom, sleeps 2)
- 1 Double bedroom (en-suite bathroom, sleeps 2)
- 1 Children's bunk room (en suite shower room, sleeps 2)
- 1 Master double bedroom (en-suite bathroom, sleeps 2)
- Terrace with dining area and outdoor living area

SECOND FLOOR

- Main living area
- Dining room (sits 10 comfortably)
- Separate kitchen
- Separate cosy TV snug room
- Balcony with dining area and barbeque

GROUND FLOOR

- 1 Twin-bedroom
(en-suite bathroom, sleeps 2)
- 1 Double bedroom
(en-suite shower room, sleeps 2)
- Main entrance and hallway
- Office x2, 1 with en-suite bathroom
- Laundry facilities
- Ski locker
- Cinema room
- Large entertainment room
- Wine cellar
- Technical room
- Guest restroom
- Private garage

LOWER GROUND FLOOR

- Personal spa
- Whirlpool jacuzzi
- Hamam
- Relaxation area
- Gym
- Separate restroom
- Shower room

STANDARD CATERED SERVICES PROVIDED

- Welcome drink upon arrival
- Concierge service on arrival, departure and for the duration of the stay
- Seven course dinner on six evenings of the week (staff have one evening off)
- Chef will work together with guests to elaborate your meals
- Afternoon tea on six afternoons of the week
- Cooked breakfast provided daily
- Dedicated driver service provided daily from 8.30am to 1am
- Daily housekeeping service
- Complimentary daily newspapers

The chalet is sold on a fully catered basis which include a professional chef, two hosts and a daily dedicated driver service. Food and alcohol is an additional charge plus 10%.



Chalet White Ace

Gstaad

Chalet White Ace is the truly exceptional stand-alone chalet near the centre of Gstaad. An impressive alpine retreat, this chalet is nestled in a beautiful hamlet surrounded by terraces and garden creating maximum privacy for the most discerning client. White Ace's position affords stunning panoramic views across the valley towards the mountains in the distance.

Sleep: 10 . Bedrooms: 5 . Living area: 350 m2 .



Specification .



White Ace is the truly exceptional stand-alone chalet near the centre of Gstaad. An impressive alpine retreat, this chalet is nestled in a beautiful hamlet surrounded by terraces and garden creating maximum privacy for the most discerning client. White Ace's position affords stunning panoramic views across the valley towards the mountains in the distance.

A haven of sophistication the chalet sleeps 10 people in five luxurious double bedrooms. Modern chic furniture blends with traditional alpine wood creating a wonderful atmosphere and ambiance throughout. The chalet boasts the latest internal audio system as well as a fantastic cinema room, spa with gym, sauna and hammam.

You enter the chalet through the private garage into the office which is focused around a stunning glass table. Sliding doors separate the sumptuous cinema room which is adorned with luxurious fabrics and cushions. Ultimate relaxation is guaranteed at White Ace, there is also a well-equipped gym, sauna and hammam on this floor as well as a shower room with guest toilet.

Ascending the stairs to the main sleeping floor on the ground floor there are four spacious double bedrooms. The beautifully designed bedrooms all have French windows which open out onto the surrounding garden. Two of the double bedrooms have en-suite shower rooms, whilst two of the bedrooms share a bath and shower room. There are TV's in all the bedrooms.

The first floor is occupied by the elegant dining room and sumptuous living area. There is an open plan kitchen where you can watch your Bramble Ski chef prepare the finest cuisine each evening. Floor to ceiling sliding doors open out onto the wrap around balcony, allowing light to flood in.

The top floor of the chalet is home to the wonderful master bedroom and its own private en-suite bathroom with separate shower.

Access to the ski room is from the garage which has one underground parking space. The chalet is sold on a fully catered basis which includes a professional chef, two hosts and a daily dedicated driver service. Food and alcohol is an additional charge plus 10%.



INTERIOR

Sleeps 10
350 square meters
5 Bedrooms
5 Individual Beds
4 Bathrooms
1 Additional WC
12 Dining Table Seats
10 Living Area Seats

WELLNESS AND RELAXATION

Hammam/steam room
Gym
Spa

APPLIANCES

Wifi
Integrated sound system

ENTERTAINMENT

Dedicated cinema room

ADDITIONAL

Wood burning fireplace
Private laundry facilities
Private ski locker
Cot/high chair available

Layout

TOP FLOOR (2ND FLOOR)

1 master double bedroom (en-suite bathroom)

LIVING FLOOR (1ST FLOOR)

Open plan kitchen, living and dining area

SLEEPING FLOOR (GROUND FLOOR)

1 double bedroom (en-suite shower room, terrace access)

1 double bedroom (en-suite shower room, terrace access)

1 double bedroom (shared bathroom, terrace access)

1 double bedroom (shared bathroom, terrace access)

ENTRANCE LEVEL (LOWER GROUND FLOOR)

Gym

Sauna

Hammam

Cinema room

Office

Ski room

Laundry room

Garage

STANDARD CATERED SERVICES PROVIDED

- Champagne reception on arrival
- Concierge service on arrival, departure and for the duration of the stay
- Five course dinner on six evenings of the week (staff have one evening off)
- Afternoon tea on six afternoons of the week
- Cooked breakfast provided daily
- Dedicated driver service provided daily from 8.30am to 1am
- Daily housekeeping service
- Mid-week towel change
- Robes
- Slippers
- Toiletries
- Complimentary daily newspapers

The chalet is sold on a fully catered basis which include a professional chef, two hosts and a daily dedicated driver service. Food and alcohol is an additional charge plus 10%.

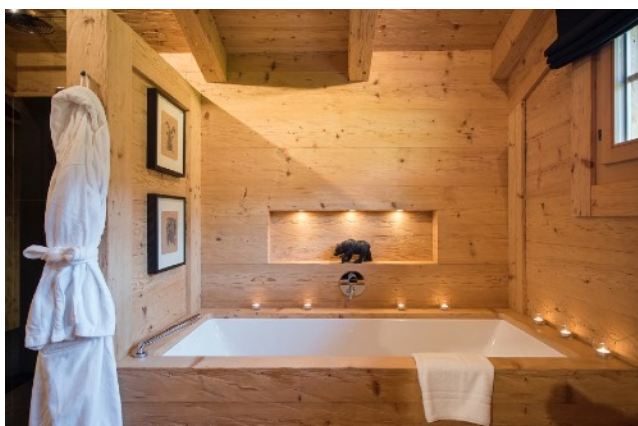
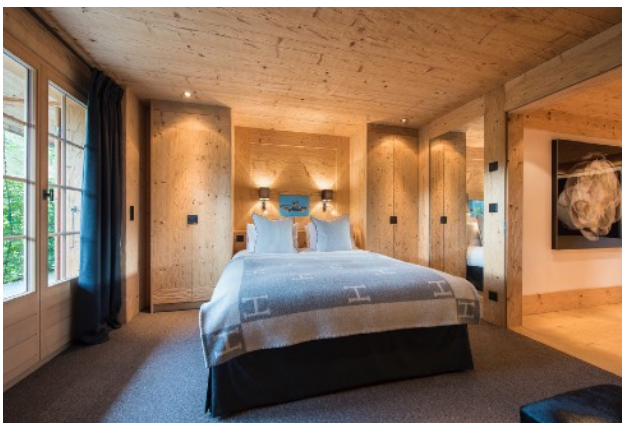


Chalet White Ace

Gstaad

Chalet White Ace is the truly exceptional stand-alone chalet near the centre of Gstaad. An impressive alpine retreat, this chalet is nestled in a beautiful hamlet surrounded by terraces and garden creating maximum privacy for the most discerning client. White Ace's position affords stunning panoramic views across the valley towards the mountains in the distance.

Sleep: 10 . Bedrooms: 5 . Living area: 350 m2 .



Specification .



White Ace is the truly exceptional stand-alone chalet near the centre of Gstaad. An impressive alpine retreat, this chalet is nestled in a beautiful hamlet surrounded by terraces and garden creating maximum privacy for the most discerning client. White Ace's position affords stunning panoramic views across the valley towards the mountains in the distance.

A haven of sophistication the chalet sleeps 10 people in five luxurious double bedrooms. Modern chic furniture blends with traditional alpine wood creating a wonderful atmosphere and ambiance throughout. The chalet boasts the latest internal audio system as well as a fantastic cinema room, spa with gym, sauna and hammam.

You enter the chalet through the private garage into the office which is focused around a stunning glass table. Sliding doors separate the sumptuous cinema room which is adorned with luxurious fabrics and cushions. Ultimate relaxation is guaranteed at White Ace, there is also a well-equipped gym, sauna and hammam on this floor as well as a shower room with guest toilet.

Ascending the stairs to the main sleeping floor on the ground floor there are four spacious double bedrooms. The beautifully designed bedrooms all have French windows which open out onto the surrounding garden. Two of the double bedrooms have en-suite shower rooms, whilst two of the bedrooms share a bath and shower room. There are TV's in all the bedrooms.

The first floor is occupied by the elegant dining room and sumptuous living area. There is an open plan kitchen where you can watch your Bramble Ski chef prepare the finest cuisine each evening. Floor to ceiling sliding doors open out onto the wrap around balcony, allowing light to flood in.

The top floor of the chalet is home to the wonderful master bedroom and its own private en-suite bathroom with separate shower.

Access to the ski room is from the garage which has one underground parking space. The chalet is sold on a fully catered basis which includes a professional chef, two hosts and a daily dedicated driver service. Food and alcohol is an additional charge plus 10%.



INTERIOR

Sleeps 10
350 square meters
5 Bedrooms
5 Individual Beds
4 Bathrooms
1 Additional WC
12 Dining Table Seats
10 Living Area Seats

WELLNESS AND RELAXATION

Hammam/steam room
Gym
Spa

APPLIANCES

Wifi
Integrated sound system

ENTERTAINMENT

Dedicated cinema room

ADDITIONAL

Wood burning fireplace
Private laundry facilities
Private ski locker
Cot/high chair available

Layout

TOP FLOOR (2ND FLOOR)

1 master double bedroom (en-suite bathroom)

LIVING FLOOR (1ST FLOOR)

Open plan kitchen, living and dining area

SLEEPING FLOOR (GROUND FLOOR)

1 double bedroom (en-suite shower room, terrace access)

1 double bedroom (en-suite shower room, terrace access)

1 double bedroom (shared bathroom, terrace access)

1 double bedroom (shared bathroom, terrace access)

ENTRANCE LEVEL (LOWER GROUND FLOOR)

Gym

Sauna

Hammam

Cinema room

Office

Ski room

Laundry room

Garage

STANDARD CATERED SERVICES PROVIDED

- Champagne reception on arrival
- Concierge service on arrival, departure and for the duration of the stay
- Five course dinner on six evenings of the week (staff have one evening off)
- Afternoon tea on six afternoons of the week
- Cooked breakfast provided daily
- Dedicated driver service provided daily from 8.30am to 1am
- Daily housekeeping service
- Mid-week towel change
- Robes
- Slippers
- Toiletries
- Complimentary daily newspapers

The chalet is sold on a fully catered basis which include a professional chef, two hosts and a daily dedicated driver service. Food and alcohol is an additional charge plus 10%.