



## **Chalet Rainer (Ex. Grace)**

Zermatt

Perfection, discretion and sophistication are at the heart of everything

This chic and sumptuous Chalet is built to the highest standard, featuring floor to ceiling windows on all three levels, and a dramatic vaulted interior. South facing balconies capture the breathtaking scenic views of the Matterhorn and surrounding mountains.

Built on a south-facing hillside in the exclusive Petite Village area, two minutes by taxi from the Sunnegga Express lift and three minutes from the village centre, Chalet Grace already has a reputation as one of the most luxurious and spectacular chalets in Zermatt.

The raised dining room seats 14 people. The stylish and comfortable open-plan lounge features a French stone open fire-place and adjoining bar area, opening up to a large outside living space with loungers, tables and chairs. The uninterrupted views of Zermatt town below and the Matterhorn at the end of the valley are spectacular from the picture windows.

Sleep: 10+2 . Bedrooms: 5 . Living area: 500 m2 .



This Sophisticate, Cozy Chalet is overlooking the Zermatt Village with a direct view to the Matterhorn and sunset.

Enjoy a apres-ski massage in the Chalet Spa area with out-door Jacuzzi, where you can relax your body and enjoy a glass of refreshing home-made limonade or a glass of champagne.

The chalet fully catered, comes with 4 staff including Chalet Manager

You can discuss and arrange your special wishes with the Chalet Manager and the Chef for any special meals diet or to arrange a table reservations in one of the famous ski-slopes restaurant.

## Specification . 5 Bedrooms



### **Aglea - Master**

Twin or Superking size bed. En-suite bathroom with bath and separate shower. Opens to balcony with views across Zermatt to Matterhorn. Plasma TV with Sky & DVD Player.

### **Hegemone**

Twin or Superking size bed. En-suite bathroom with bath and separate shower. Opens to balcony with view across Zermatt to Matterhorn. Plasma TV with Sky & DVD Player.

### **Pasithea**

Twin or Superking size bed. En-suite bathroom with shower. Opens to private balcony, view across Zermatt to Matterhorn. Plasma TV with Sky & DVD Player.

### **Euphrosyne**

Twin or Superking size bed. En-suite bathroom with bath and separate shower. Two sofa beds. This bedroom can sleep 4 pax. Plasma TV with Sky and DVD Player.

### **Thalia**

Twin or Superking size bed. En-suite bathroom with shower. Plasma TV with Sky & DVD Player.







### **Facilities**

- Relaxation area for yoga, Pilates & relaxation
- Sauna, massage room, shower, WC
- Outdoor hot tub
- Ski room with heated boot racks
- DVDs, games, books, toys, sledges
- TV lounge with plasma screen, Sky Channels, DVD, surround sound system.
- Plasma TV, Sky & DVD in each bedroom
- Integrated music system and iPod docking station in living area

### **Privacy & Location**

- Located in exclusive area of Petite Village
- 5 minutes electric taxi to town centre; 10 minute walk to town centre

### **Creature Comforts**

- Feather (or anti-allergy) pillows and duvets
- Personal bathrobes and slippers
- Hairdryer in each bedroom
- Diptyque bathroom products
- Fresh flowers and daily newspapers

### **Communications**

- Manager computer, printer and fax
- iPad
- Secure wireless internet throughout

## Floor plan



Floor 1



Floor 2



Floor 3

### Five Star Catered Prices Include

- Luxury accommodation for 10-12 guests
- Exclusive use of the chalet and its facilities
- Dedicated service from your chalet staff
- Perrier Jouët Champagne
- Daily breakfast and afternoon tea
- Children's supper every day
- Magnificent dinners prepared by the Chef (6 nights a week)
- Carefully selected house wines
- An open spirit bar and a range of soft drinks
- Fresh flowers and daily newspapers



## **Chalet Heinz Julen Penthouse Zermatt**

*available Full-catered or Self-catered*

Zermatt's internationally acclaimed architect, Heinz Julen, designed this extraordinary double-level 260m<sup>2</sup> Penthouse which is set above The Loft. With concepts such as a fireplace nesting in the middle of the living-room window, and original hand-made furniture (including Julen's famous chandeliers and chairs), it has featured in several designer magazines.

Very airy in feel, due to the extensive use of glass roofs, the chalet has a unique bird's nest view of the village and the Mischabel mountains. Access is a 2 minute walk from the top of the Omnia Hotel lifts, for which you will have a private key. The village end of the lift delivers you to the heart of Zermatt, in the main street close to the church.

Sleep: 8. Bedrooms: 4 . Living area: .





On the main floor there is a large living room with three separate seating areas, a dining section, the open-plan kitchen and two terraces. There are two bedrooms with high beamed ceilings at each end of this floor. Each bedroom has an en-suite shower/WC, TV and a balcony.

The top floor consists of the master bedroom with a free-standing round jacuzzi bath, sloping glass ceilings, stunning views, and a separate en-suite shower/WC.

On the ground floor you will find the fourth double bedroom with en-suite massage shower and WC; your private glass-fronted sauna, an exercise room with a treadmill and two loungers to relax in.

All three floors are accessed by your own private elevator and/or stairs. Superb, stylish and clever, the Heinz Julen Penthouse vies with the Loft for the prize of Zermatt's most original property.



All guests of the Heinz Julen Penthouse have half-price access between 1 pm and 5 pm to the Genesis Spa of the Backstage Hotel.

If rented with the Heinz Julen Loft, the two HJ properties, located in the same building, can sleep 14 guests.

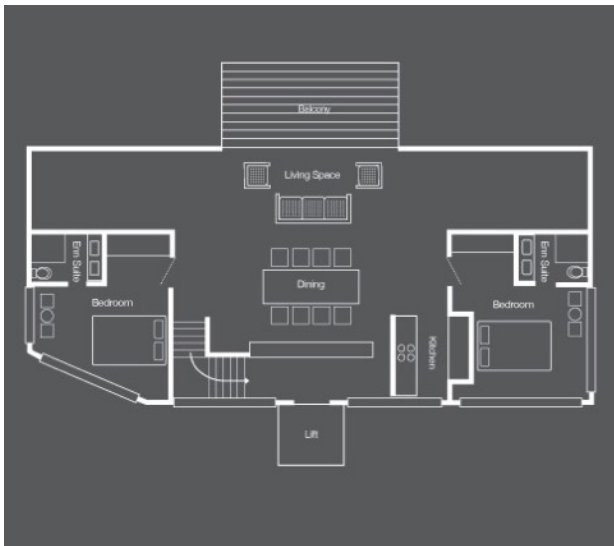




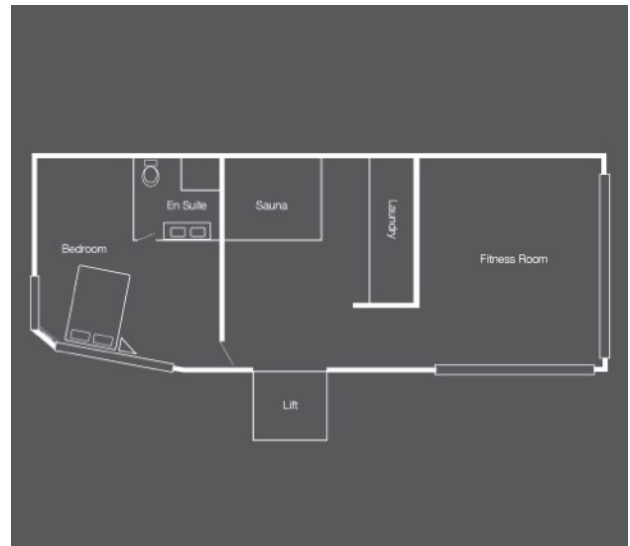
### Chalet Features

- Sleeps 8 with 4 double bedrooms and 4 bathrooms
- Professional chef (with our half board catering service only)
- Experienced chalet host (with our half board catering service only)
- Full concierge service/assistance
- Choice of either continental or a delicious cooked breakfast (with our half board catering service only)
- Afternoon tea, pre-dinner canapés, gourmet dinner (with our half board catering service only)
- Champagne, selected wines and open bar (with our half board catering service only)
- Daily cleaning as part of our catered service
- Wood-fireplace in living room
- PC and wireless broadband internet
- Chalet laptop/PC provided
- TV and DVD in each bedroom
- Large modern flat screen TV with DVD and satellite/cable TV
- Laundry and dry cleaning service
- Mountain Views
- 8 min to ski lifts
- Very central location 1 min walk from private lift
- 1 min walk from private lift to chalet entrance
- Designer furniture and special architectural feature
- Self-standing jacuzzi bath in master bedroom
- Washing machine and tumble dryer
- Exercise room with a Treadmill
- Unique views of the village and mountains

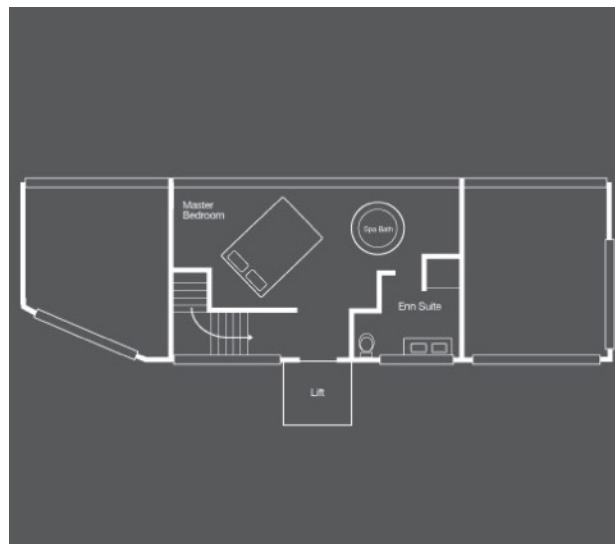
## Floor plan



Main Floor



Ground Floor



Master bed room

### Luxury Catered Services

The chalet is catered by one of our gourmet chefs and serviced by a dedicated chalet host and our in resort concierge team. As part of our half-board catered service all wines champagne and bar drinks are included. Of course the chalet includes all modern comforts such as a large LCD flat screen TV with DVD and cable, sound system, lap top computer, free wireless broadband internet access, a well appointed kitchen and a private sauna. Created as Heinz Julen's private home, it is full of the designer's unique touches. Its location perched high on a hill gives it spectacular views, yet access to the heart of the village is easy.



## **Apartment Mera Peak Zermatt**

*Self-catered*

The brand new Mera Peak Penthouse was very recently completed and is simply stunning with its luxurious modern furnishings, generous proportions and super high ceilings. Conveniently located close to the river and the Sunnegga Express base lift station, the Mera Peak Penthouse occupies the entire top floor (with direct elevator access) of a chalet completed in January 2015.

Much thought has gone into the lighting, which features both subtle spotlighting and eye catching chandeliers. The muted pastel and brown tones, combined with wooden panelling, ceiling and floors, all combine to provide a chic and yet cosy environment, harmoniously balancing Alpine tradition with modern style. Mera Peak is a very elegant and stylish base to make the most of Zermatt.

Sleep: 8 . Bedrooms: 4 . Living area: 146m<sup>2</sup> .





It has four double bedrooms and three bathrooms, a large open plan kitchen - living room with a fireplace and a huge flat screen TV, double height sloping wooden beamed ceilings, a balcony and a large south facing terrace with superb views of the village and the Matterhorn.

Mera Peak is spacious with an inside surface area of 146m<sup>2</sup>. Every bedroom has a large flat screen TV. The two bigger bedrooms each have an en suite bathroom, while the two smaller bedrooms share a bathroom.







### Chalet Features

- Sleeps 8 with 4 double bedrooms and 3 bathrooms
- Full concierge service/assistance
- Daily cleaning on request
- Wood-fireplace in living room
- PC and wireless broadband internet
- Large modern flat screen TV with DVD and satellite/cable TV
- Laundry and dry cleaning service
- Splendid Matterhorn views
- 4 minutes to the ski lift
- 7 minutes on foot to the village centre
- Spacious penthouse apartment
- Fully equipped open plan kitchen
- Brand new - completed in January 2015



## Floor plan



### **SELF CATERED RENTAL ONLY**

On site Concierge can assist you during your stay



## **Chalet Shalimar**

Zermatt

Chalet Shalimar is one of Zermatt's hidden treasures. Nestled away from the hustle and bustle in the heart of Winkelmatten Chalet Shalimar is a haven of serenity and peacefulness. The centre of Zermatt is just a 15 minute scenic walk away or a short ride in an electric taxi. An ideal destination for the most discerning skier you can ski to and from the chalet and the gondola nearby takes you up to the glacier paradise.

Sleep: 20 . Bedrooms: 10 . Living area: 350 m2 .







## Specification .



Perfectly positioned, the views of the world renowned Matterhorn are arguably some of the best in the resort. Each apartment has a perfect view of this dramatic, breath taking peak from a balcony or terrace.

The wellness and spa area in Chalet Shalimar is at the heart of the property with an indoor swimming pool affording wonderful views of the Matterhorn, sauna, hammam and massage room all on the ground level of the chalet.

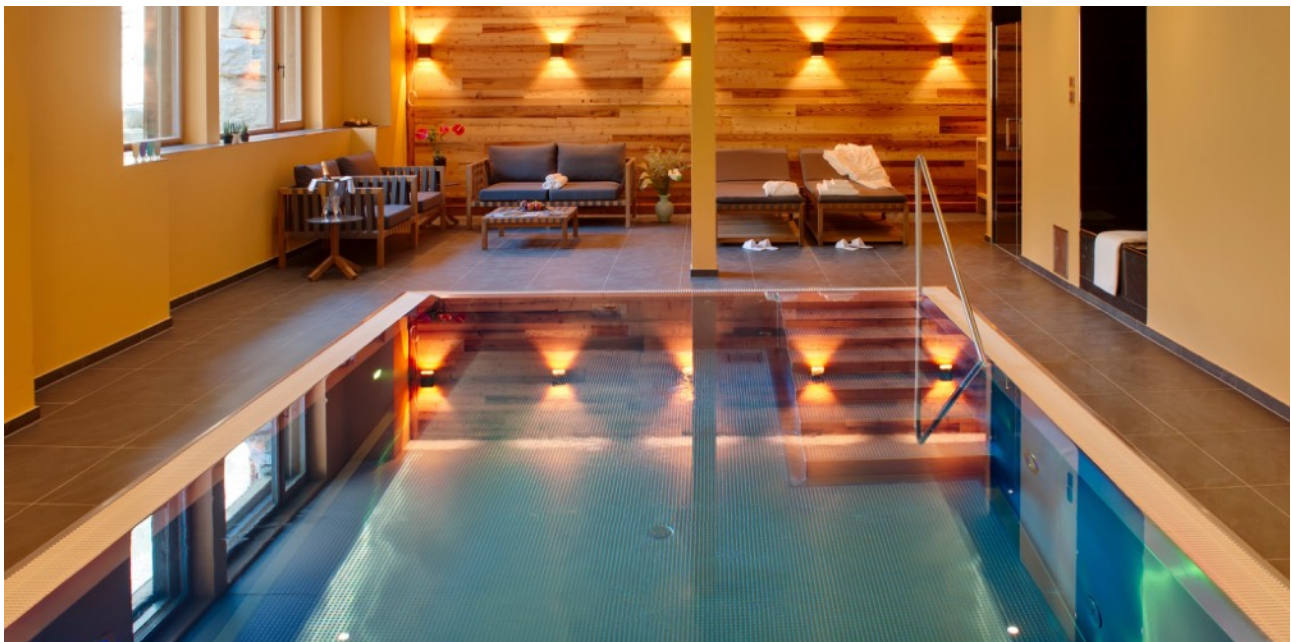
Chalet Shalimar sleeps up to 20 people in 10 twin bedrooms, all with en-suite bath and shower rooms. Each bedroom can be configured as a double bedroom with single duvets. Perfect for large corporate groups and families the chalet can be taken as one or split into an 8 person (Elena) and 12 person (Alex) apartment for smaller groups. When the apartments are split each have their own living spaces and facilities for maximum comfort.

Traditional alpine wood and timber is throughout the chalet and specially selected soft furnishings to create a relaxing and cosy atmosphere.

The top floor of Chalet Shalimar is dedicated to the living and dining rooms which have floor to ceiling sliding doors allowing light to flood in.

The spacious balconies afford breath taking views of the Matterhorn providing the perfect back drop for a pre-dinner drink or for soaking in the rays in the spring warmer months. After the sun sets cosy up on the sumptuous sofas in front of the roaring fire. The main dining room can sit up to 20 people when taken as a whole chalet and the flexible living areas mean there is always somewhere to find peace and quiet.

The chalet is sold on a catered or self-catered basis.



#### INTERIOR

Sleeps 20  
866 square metres  
10 Bedrooms  
20 Individual Beds  
10 Bathrooms  
0 Additional WCs  
0 Dining Table Seats  
0 Living Area Seats

#### ADDITIONAL

Wood burning fireplace  
Private laundry facilities  
Private ski locker  
Cot/high chair available

#### APPLIANCES

TV/DVD  
WiFi

#### WELLNESS & RELAXATION

Indoor Pool  
Hammam / Steam room  
Massage treatment room  
Sauna  
South facing balconies

## Layout

### LIVING FLOOR (Top Floor)

Living room  
Dinning room  
2 x Entertainment rooms  
2 x Kitchens

### GROUND FLOOR

4 x Twin rooms (en-suite bath and shower room)  
Living room  
Dinning room  
Kitchen  
Ski & Boot room with heated boot warmers rack

### SLEEPING FLOOR (1st Floor)

6 x Twin rooms (en-suite bath and shower room)

### SPA FLOOR (Lower ground floor)

Indoor Swimming pool  
Sauna  
Hamman  
Massage room

### LOCATION

Address:

Chalet Shalimar  
Moosstrasse 20 - 3920 Zermatt

Google co-ordinates:

46.011173, 7.744480

### STANDARD CATERED SERVICES PROVIDED

- Champagne reception on arrival
- Drinks tray: 2 bottles
- Breakfast: 6 days
- 5 course dinner: 6 evenings
- Afternoon tea : 6 days
- Mid-week towel change
- Robes , Slippers
- Staff days off: one
- Complimentary daily newspapers
- Days cleaning: 7 days
- Complimentary house wine
- Beer : 1 case
- Concierge service
- Ski Instructor: 2 days included
- Toiletries

